



Automatikverbinder

Automatic Connector

Beschreibung Stahl zur schnellen und stabilen Verbindung von zwei Aluminiumprofilen ohne Profilbearbeitung; selbstschneidendes Gewinde

Material Automatikverbinder: Stahl
Abdeckkappe: Kunststoff PA, glasfaserverstärkt

Oberfläche Automatikverbinder: verzinkt
Farbe Abdeckkappe: schwarz

Montageset 1 1 Schneidhülse,
1 Schraube DIN 912 - M6 x 40,
1 Nutenstein - Nut 8 - M6

Montageset 2 1 Schneidhülse,
1 Schraube DIN 912 - M6 x 40,
1 Nutenstein - Nut 8 - M6,
1 Abdeckkappe

Liefereinheit 100 Stück

Description *Steel* To connect two aluminum profiles fast and solid, assembly without machining; self-cutting thread

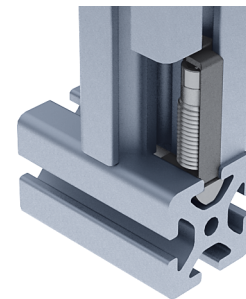
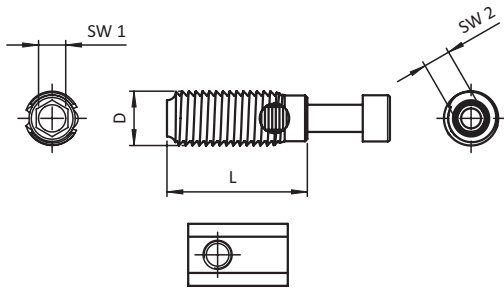
Material Automatic connector: *Steel*
Cover cap: *Nylon PA, glass fibre reinforced*

Surface Automatic connector: *Zinc plated*
Color Cover cap: *Black*

Assembly Set 1 1 self-cutting bush,
1 screw DIN 912 - M6 x 40,
1 T-slot nut - slot 8 - M6

Assembly Set 2 1 self-cutting bush,
1 screw DIN 912 - M6 x 40,
1 T-slot nut - slot 8 - M6
1 cover cap

Pack Quantity 100 pieces



Automatikverbinder Automatic Connector	SW 1	Nut Slot	Profil Profile	D [mm]	L [mm]	SW 2	Schraube Screw	Gewicht [g] Weight [g]		Teil-Nr. Part #
Schneidhülse <i>Self-cutting bush</i>	6	8	40	12.0	31.0	-	-	13.0	I	099GS081
Abdeckkappe <i>Cover cap</i>	-	8	40	-	-	-	-	1.0	I	099GA081K
inkl. Montageset 1 <i>With assembly set 1</i>	6	8	40	12.0	31.0	6	M6 x 40	33.0	I	099G081
inkl. Montageset 2 <i>With assembly set 2</i>	6	8	40	12.0	31.0	6	M6 x 40	34.0	I	099G081S03